

THE PUSH-UP BRA: SUGGESTIONS AND SECRETS.

The push-up bra is the bra par excellence, that mostly enhances the breasts of any woman for any breast size (small and large). With a very plunging neckline and a very peculiar shape, pushed the bust line to its centre and create a full and sexy cleavage.

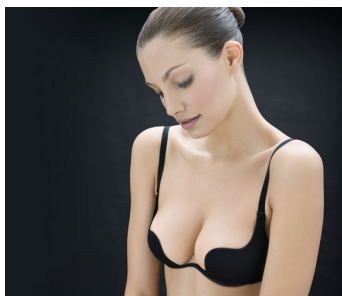
Cups are always padded and can vary according to type of padding insert and neckline.

The push-up cup is quite often graded: besides the traditional padding, extra padding is used, such as oil- or air-filled sacks to add shape to the breasts.

It is excellent for low-cut dresses and perfect to be worn every day.

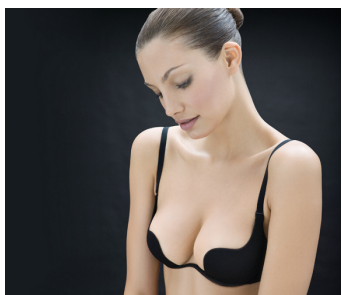
WITHIN THE SENSATION RANGE, CHOOSE THE MODEL THAT BEST ENHANCES YOUR NATURAL FEMININITY.

STAR-CUP: SENSUAL AND TECHNOLOGICAL.



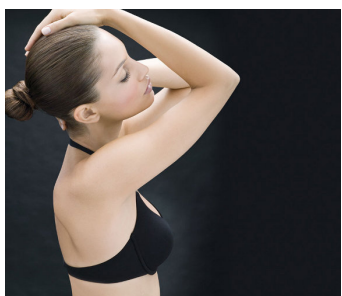
It has the basic support of the push-up bra but its design is exclusive. The technological silicone cups ensure the minimum breast coverage combined with utmost wearability.

STAR-CUP PLUS: TO ADD SHAPE AND FULLNESS.



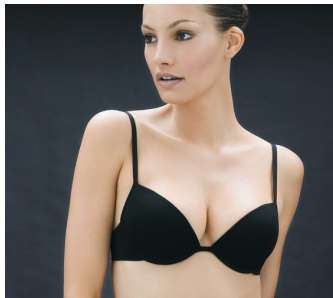
A special oil-filled pad inside the cup adds more shape and fullness to the breasts.

XT: BASIC EVERYDAY.



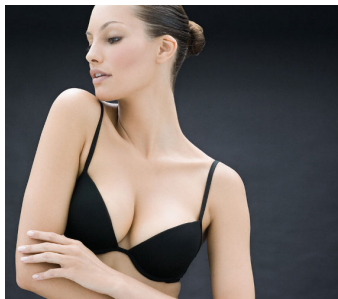
It is a non-graded push-up bra, with an excellent wearability even in middle-large sizes. Quite versatile for skin-effect dresses and shirts thanks to the various X-halterneck fastening.

SOFT-UP: ADDS ONE SIZE.



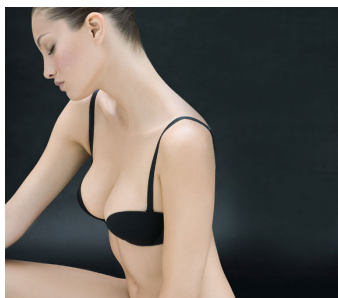
It is the push-up bra with a surprising oil-filled padding which adds one size to your breasts and looks therefore perfect for middle-small size breasts.

EXTREME: VOLUME NATURAL.



This model is graded with an oil-filled pad but keeps a quite round and natural shape. The soft cup fits any size.

EV.A: TECHNOLOGY, SUPPORT AND SEDUCTION.



Thanks to the technological silicone cups and despite the very tiny coverage, support and fit are ensured. It is a very basic push-up bra: enticing, fancy and sensual.

MINI PUSH-UP: MAXIMUM NECKLINE.

It is a classical push-up bra with a plunging neckline. The cup contains a small pocket for extra padding, the well-known "fish-shaped" insert pad to add shape and fullness to your breasts.